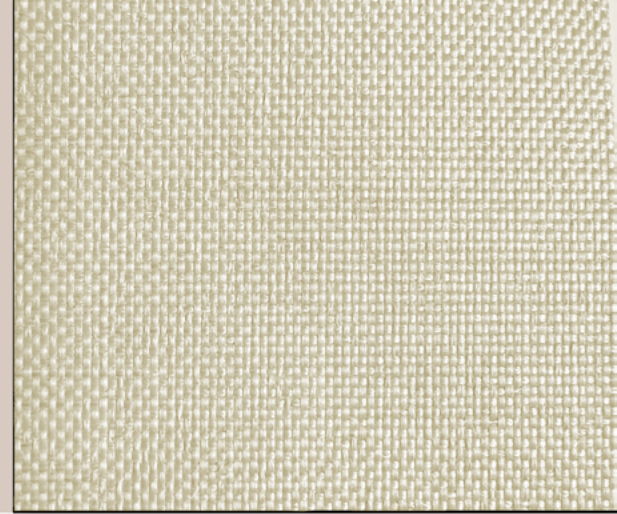
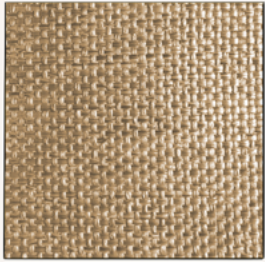


PATARA



PATARA-001



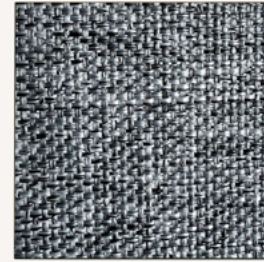
PATARA-002



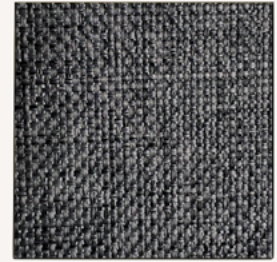
PATARA-003



PATARA-004



PATARA-005



PATARA-006

TECHNICAL PROPERTIES

Article	Test Standards	PATARA
Width (cm)		205 & 260 & 305
Basic Material		PES
Weight approx. (gsm)	EN ISO 2286-2 Method A	380+-5
Thickness approx. (mm)	EN ISO 2286-3	0,51
Color fastness to light (window side)	EN ISO 105-B02	min 5 - 6
Tensile Strength (N)	EN ISO 1421 Method-1	Weft 1468 - Warp 1796
Max Elongation (%)	EN ISO 1421 Method-1	Weft 26 - Warp 35
Tear Strength (N)	EN ISO 4674-1 Method A	Weft 250 - Warp 280
Roll length approx. (m)		30



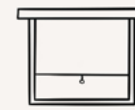
PVC Free



Lead Free



Phthalate Free



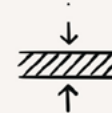
Interior Usage



Thermal Comfort

OPTICAL THERMAL

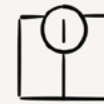
colour	optical factors			thermal factors				g value
	fabric			fabric				
	visible light (%)			solar radiation (%)				
	Tv	Rv	Av	Ts	Rs	As	TUV	
PATARA-001	0	43	57	0	38	62	0	0,145
PATARA-002	0	43	57	0	39	61	0	0,144
PATARA-003	0	45	55	0	39	61	0	0,143
PATARA-004	0	44	56	0	39	61	0	0,144
PATARA-005	0	14	86	0	11	89	0	0,209
PATARA-006	0	13	87	0	11	89	0	0,209



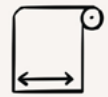
Fabric Thickness
0,51mm



UV Blockage



Weight
380+-5 gsm



Width
205 & 260 & 305 cm

*You can find detailed information about test parameters on the last page

Product Features

- > **Acrylic backcoated** PES fabric **woven** with staple yarns
- > **Thermal comfort** and **privacy 7/24**
- > **Good mechanical strength** and **dimensional stability**
- > **Textile appearance** with **color-matched backing**

**Textile structures and colors may appear different than reality due to the nature of the media