

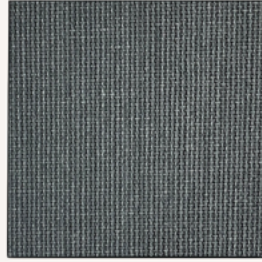
ASPENDOS



ASPENDOS-002



ASPENDOS-003



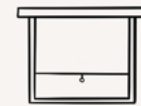
ASPENDOS-004



ASPENDOS-001

TECHNICAL PROPERTIES

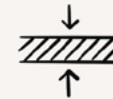
Article	Test Standards	ASPENDOS
Width (cm)		205 & 260 & 305
Basic Material		PES
Weight approx. (gsm)	EN ISO 2286-2 Method A	181+-5
Thickness approx. (mm)	EN ISO 2286-3	0,32
Color fastness to light (window side)	EN ISO 105-B02	min 6
Tensile Strength (N)	EN ISO 1421 Method-1	Weft 572 - Warp 858
Max Elongation (%)	EN ISO 1421 Method-1	Weft 18 - Warp 14
Tear Strength (N)	EN ISO 4674-1 Method A	Weft 23 - Warp 32
Roll length approx. (m)		50



Interior Usage



Thermal Comfort



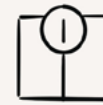
Fabric Thickness
0,32mm



UV Blockage

OPTICAL THERMAL

colour	optical factors			thermal factors				g value
	fabric			fabric				
	visible light (%)			solar radiation (%)				
	Tv	Rv	Av	Ts	Rs	As	TUV	
ASPENDOS-001	18	82	0	21	72	7	1	0,222
ASPENDOS-002	22	75	3	25	67	8	1	0,266
ASPENDOS-003	5	42	53	9	40	51	1	0,207
ASPENDOS-004	1	18	81	1	17	82	1	0,205



Weight
181+-5 gsm



Width
205 & 260 & 305 cm

*You can find detailed information about test parameters on the last page

Product Features

- > **Acrylic stiffened PES fabric woven** with staple yarns
- > Good daylight utilization in light colours
- > Good **mechanical resistance** and **dimensional stability**
- > Excellent **glare control** in dark colors
- > Good **night privacy** in all colors

**Textile structures and colors may appear different than reality due to the nature of the media